

Step 1

Set and space the PowerRacks

- Establish your rows according to the layout design and azimuth orientation.
- The spacing between PowerRacks will be determined by module length.
- Mark start and end of the row and set line using string, chalk, or edge form.
- Place PowerRacks along the line at determined spacing.



Step 2

Fill PowerRacks with ballast material

- The amount of ballast needed is determined by the required wind speed tolerance.
- Depth indicators depicted inside each PowerRack are a helpful guide.
- For precision, weigh one PowerRack with various ballast levels.
- Take care to maintain alignment during ballasting.
- The use of a jig or form is a helpful way to maintain PowerRack alignment.
- Ballasting machines: Side Discharge Buckets, Cross Conveyors, Slinger Trucks, etc.



Step 3

Mount PV modules on PowerRacks

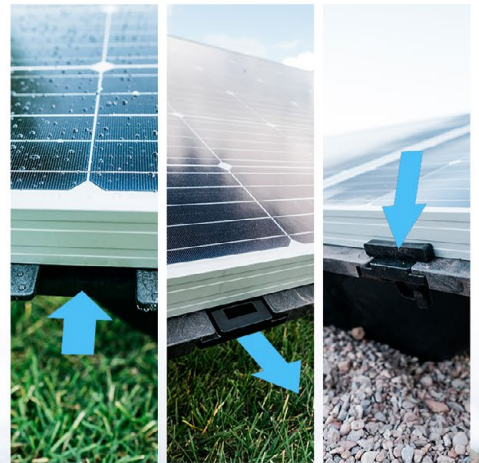
- Modules are mounted in landscape orientation.
- Two people are best for mounting, one person holding each long side.
- At the high side of the PowerRack, set module frame on the module size adapter.
- Lower the module to rest fully on the PowerRack.



Step 4

Install Mounting Retainers & Retainer Tabs

- Push sliding Mounting Retainer into place under the module frame.
- Raise the clip to press against bottom of module frame.
- Pull clip outward until its tabs firmly grasp the frame flange.
- Insert Retainer Tab by pressing its teeth into the retainer clip.



Racking is now complete. Modules are ready for connection and grounding.

WIRING AND ELECTRICAL INSTALLATION SHOULD BE PERFORMED BY A LICENSED ELECTRICIAN.

For additional guidance:
Call us at **888-788-8007** or email **info@powerfieldenergy.com**

www.powerfieldenergy.com/faqs

Patented and made in the USA | UL 2703 compliant

powerfield